

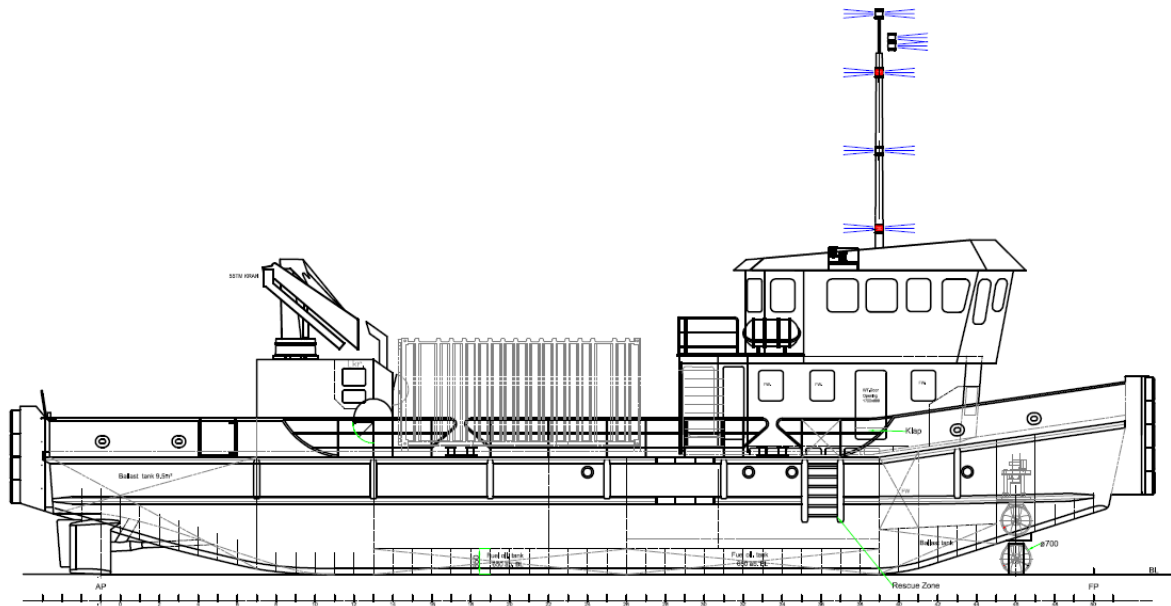
M/S Føniks Supply



Support, Transport, Diving and Work Vessel

Supply, crew support, towing, crane and survey functions

The Vessel is designed to work
to both fixed structures, platforms
and floating units.



Technical specification

Main Particulars

Length over all:	28,50 m
Breadth moulded:	7,40 m
Breadth extreme (optional):	8,00 m
Depth moulded to main deck:	3,00 m
Draft	1,70 m
Displacement (approx):	150 ton
Deck area, external:	116 m ²
Workshops, internal:	17 m ²
Deck load capacity:	75 ton

Flag/Register

Danish/Danish International Register
 SOLAS approved A1/A2
 Bureau Veritas, 1 ✳ Hull

Accommodation

High standard heated and air-conditioned accommodation with total 9 (15) berths including accommodation for crew.

- Galley, mess and dayrooms
- Offices for executives
- Sanitary facilities
- Extra accommodation container on deck (Optional)

Life saving equipment

Life-saving equipment in accordance with SOLAS

Navigation/Communication

Electronic chart system
Radar system
Radio installation according to GMDSS – area A2 and A1
AIS
Electronic GPS Compass
GPS x 3
Searchlights
Echo-sounders
ARPA

Cranes

Main crane: 52 t/m Fassi F950AXP
- 15.000 kg 2,75 m.
- 8.700 kg 5,2 m.
- 2.210 kg 16,45 m.

Propulsion system

Main engine	1 x John Deer 6125AFM75
Total power	300 (402) kW (hp) at 1800 rpm
Gear	1 x ZF gear BW 800 M20
Propulsion	1 x fixed propeller with nozzle
Schottle	2 x 120 kW hydraulically driven
DP (Optional)	

Auxiliary equipment

Generator sets	2 x Lovol, 88 kVA/33 kVA synchronized
Hydraulic Power	John Deere 4045TF258, 68 kW
Hydraulic power	80 kW

Tank Capacities and system

Fuel oil:	34 Tons
Fresh water:	2,8 Tons
Black water:	1,5 Tons
Ballast water:	32 Tons

Fuel consumption:

Transit at 11 knots:	75 L./hour
Positioned:	65 L./hour

